

Green NRG Co.

Create - Generate & Store

Green energy international environmental protection plan



Africa Into Off-grid living Green community

Part 1

Part 2

Part 3

ECO HOUSE + MPS Power Station + Clean Water

Green energy international environmental protection plan

Africa Into Off-grid living Green community



Brief

GreenNRG Co's Business Information Proposal has been developed to provide further information and specification about GreenNRG Co's going **GREEN** products.

We can provide a SIMPLE solution to POWER, HOUSING and WATER all under a trusted one company banner to allow the easiest solution to roll out a total sustainable package for your country. This solution coupled with training and manufacturing capability can assist with the current employment strategy. We can also find a solution to the unemployment that is faced in many courtiers and start to stimulate the economy in many ways.

The MPS POWER solution is a suitable and affordable **solution to provide renewable GREEN Solar, Wind and Hydro Power without the need to rely on power from the main electricity grid, and current electricity providers.** The solution represents an opportunity for consumers to collect and generate renewably energy, store and consume their own electricity to use when they like to use it as needed. The MPS unit provides a cost effective alternative to the ever increasing grid electricity prices and impact on the earth. In addition to the economic benefits, there is a reduced environmental impact compared to how GRID POWER is sourced and generated through mining harmful coal or building expensive and dangerous nuclear power plants.

With the domestic and commercial markets purchasing GREENNRG Co's energy efficient environmentally friendly MPS units, customers will be able to **power their homes or businesses without the need to rely on any other external power source or provider.**

Our systems can be connected to an on board computer like system that can be pre-set and monitor the usage of power and be **charged** out at a set rate depending on an agreed price which can be paid in advance just like a pre paid phone card.

This function will enable people to purchase a system and install it for **FREE** and then charge the power back to their tenant and recoup the cost of the system in a shorter period of time or generate funds for government projects and benefit the people.

In Addition to the Power solution we offer we have partnered up with **INNA WATER** solutions to provide clean sustainable drinking and AGRICULTURE water solutions for any area even if currently the water is not sustainable for current hygiene or sanitation.

Aquaculture and Agriculture. There is a growing market in water quality to address the growing number of disease that are prevalent in the prawn industry (hatcheries, and prawn farms). There is also an urgency to address the growing threat of bird influenza in the poultry Industry and improve the general water quality for this industry. Inna Water's MDP has produced restructured water that is completely disinfected without residual chemicals and has proven the ability to increase growth rates and reduce mortality.

Solution for the Aquaculture and Agriculture Market These markets will begin in Malaysia, Indonesia, Hong Kong and Australia. Inna Water Australia has recently installed water systems in two large poultry farms and has already shown significantly improved growth rates, reducing the time by 9 days. The applied technology includes the MDP, PAS and the water conditioner. Inna Water continues to be involved with Sydney Water producing pilot digesters and IP to increase methane production which will provide a more efficient sustainable renewable energy and intern reduce bio waste. Inna Water has recently supplied their unique water treatment to one of Ingham's franchised poultry farms and the farm was awarded the best poultry producer in south west QLD. Inna Water already has another order for another large Ingham grower and is now working with Riverlee Pork, a company in Australia to solve waste problems and increase biogas



Brief

ECO HOUSE

Environmentally friendly, high recycle value

Eliminating the use of steel beams, concrete, bricks and wood,

Built using high performance aluminum alloy and environmentally

Friendly materials with minimal construction waste and a small carbon footprint.

More than 90% of the aluminum used is recyclable.

Low maintenance, moisture and corrosion resistance

Aluminum profiles have ultra strong corrosion resistance and surface coating have a lifespan of 20 years.

Smooth and shiny surface makes for easy cleaning and immune to termites attack.

ADVANTAGES

High Floor loading: 250~300kg/m²

Ultra-Strong corrosion resistance

Earthquake resistance: \geq magnitude 8

Wind resistance: Level 16

Lightning protection: National standard level 2

Fire resistance: \geq 45 min

Lifespan of more than 50 years

Noise and heat insulation

Training and Employment Opportunities

A global training and certification association delivering Sustainable Management methodology (PRiSM – “projects integrating sustainable management”) to both business and project management sectors across 146 countries. The methodology is the only methodology that complies totally with the United Nations Principles of Sustainability. AT solve also provides consulting and traditional training programs across all aspects of business, project, program and contract management. As a member of both the “Sustainable Living Infrastructure Consortium (SLIC) and Finding Other Solutions (FOS) consortium, AT solve works with industry to promote and grow the understanding of sustainability and the integration with all aspects of traditional management processes and principles. The PRiSM methodology is a globally recognised tool to assist organisations to achieve enhanced results from all activities undertaken and aligns the activities with the business strategic objectives whilst recognising all aspects of “People, Planet, Profit, Process and Product” that can impact on the activities. PRiSM also provides a structured transparent reporting and review process to monitor and deal with issues in a timely manner.

AT solve has delivered PRiSM based courses across a number of Australian Universities and across a number of major corporations throughout Australia. AT Solve also works with other GPM provides to promote sustainable management training and consultancy services across a number of Asian Countries (including Malaysia).





reen NRG Co.

Create - Generate & Store

ECO House

PROPOSAL FOR POWER, WATER and HOUSING SUPPLY IN NIGERIA REGION

Environmentally Friendly,
High Recycle Value
Low maintenance, moisture and corrosion resistance



OUR STORY IS UNFOLDING IN THE FOLLOWING PLACES ...



ECO HOUSE



Environmentally friendly, high recycle value



Eliminating the use of steel beams, concrete, bricks and wood, built using high performance aluminum alloy and environmentally friendly materials with minimal construction waste and a small carbon footprint. More than 90% of the aluminum used is recyclable.



Low maintenance, moisture and corrosion resistance



Aluminum profiles have ultra strong corrosion resistance and surface coating have a lifespan of 20 years. Smooth and shiny surface makes for easy cleaning and immune to termites attack.



Safe and durable

Ultra-strong corrosion resistance,excellent moisture resistance,impervious to insects and tearmites



Floor loading: 250~300kg/m²



Ultra-Strong corrosion resistance



Earthquake resistance: \geq magnitude 8



Wind resistance: Level 16



Lightning protection: National standard level 2



Lifespan of more than 50 years



Noise and heat insulation



Fire resistance: \geq 45 minutes

STANDARD HOUSES



Type I mobile house

1 bedroom, 1 living room, 1 bathroom



Type I (open style)

1 bedroom, 1 living room, 1 bathroom



Type I (external bathroom)

2 bedrooms, 1 bathroom



Type L mobile house

1 bedroom, 1 living room, 1 bathroom



Type L 2+1 mobile house

3 bedrooms, 2 bathrooms, 2 living rooms



Type T mobile house

2 bedrooms, 1 living room, 1 bathroom

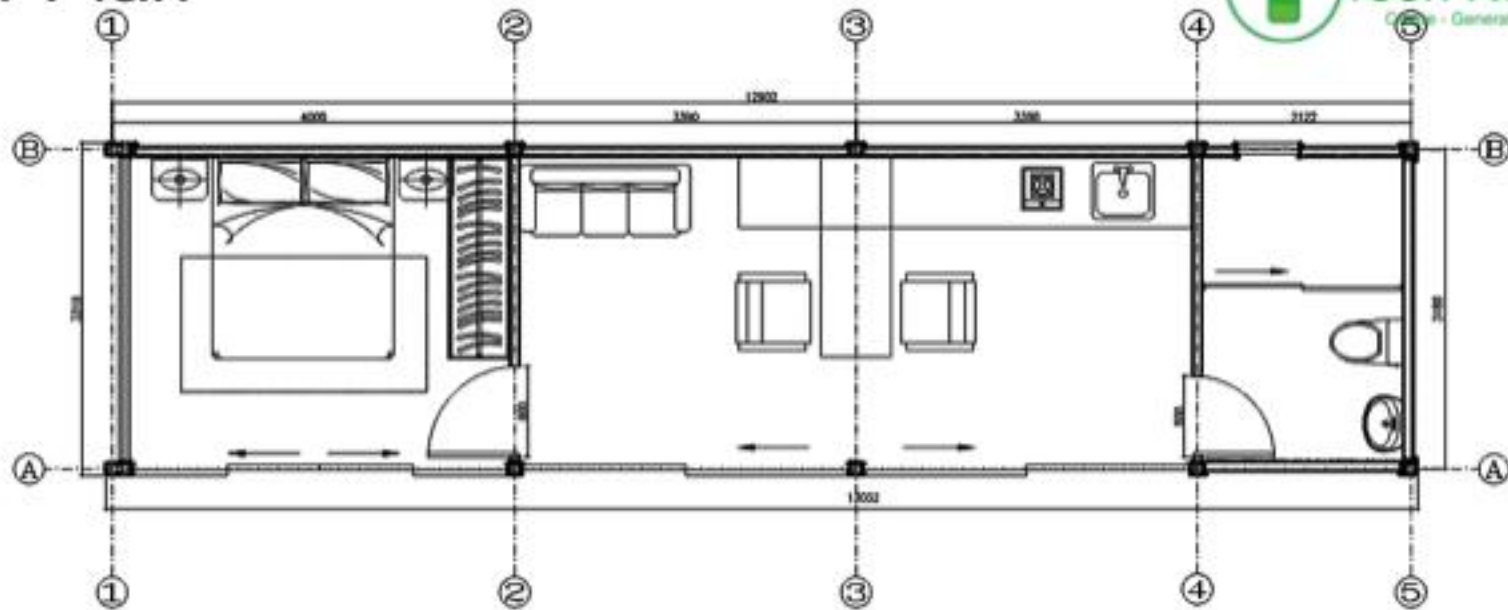
Type I mobile house

1 bedroom, 1 living room, 1 bathroom

Type I mobile house was assembled by one modular with the area of 3.3m*13m. The gross area is 43m².



Floor Plan



Interior View



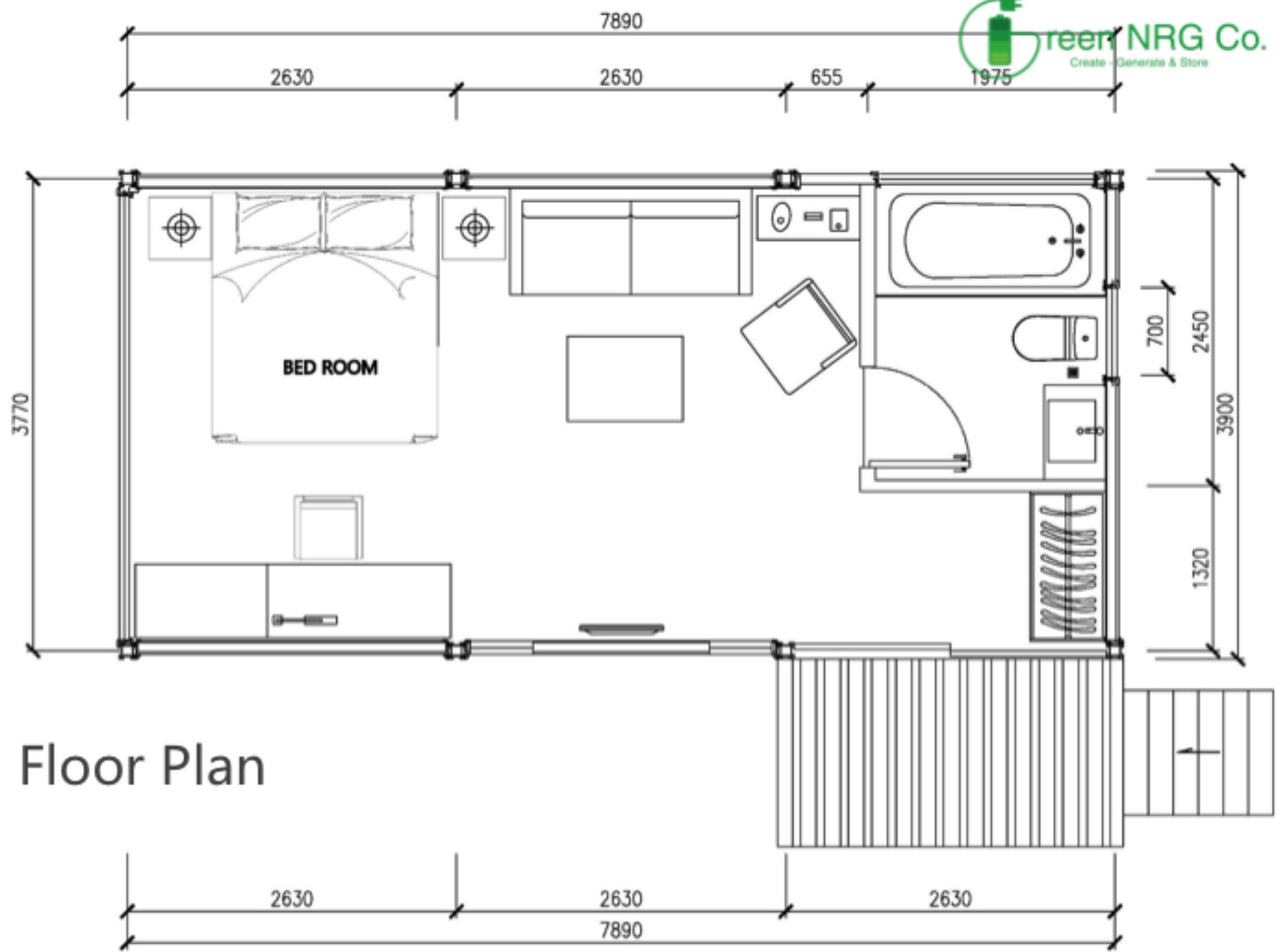
Type I (open style)

1 bedroom, 1 living room, 1 bathroom

Type I open style mobile house was assembled by one modular with the area of 4.0m*8.0m. The gross area is 32m².



Exterior View



Floor Plan

Type L mobile house



1 bedroom, 1 living room, 1 bathroom

Type L mobile house has two different layouts.

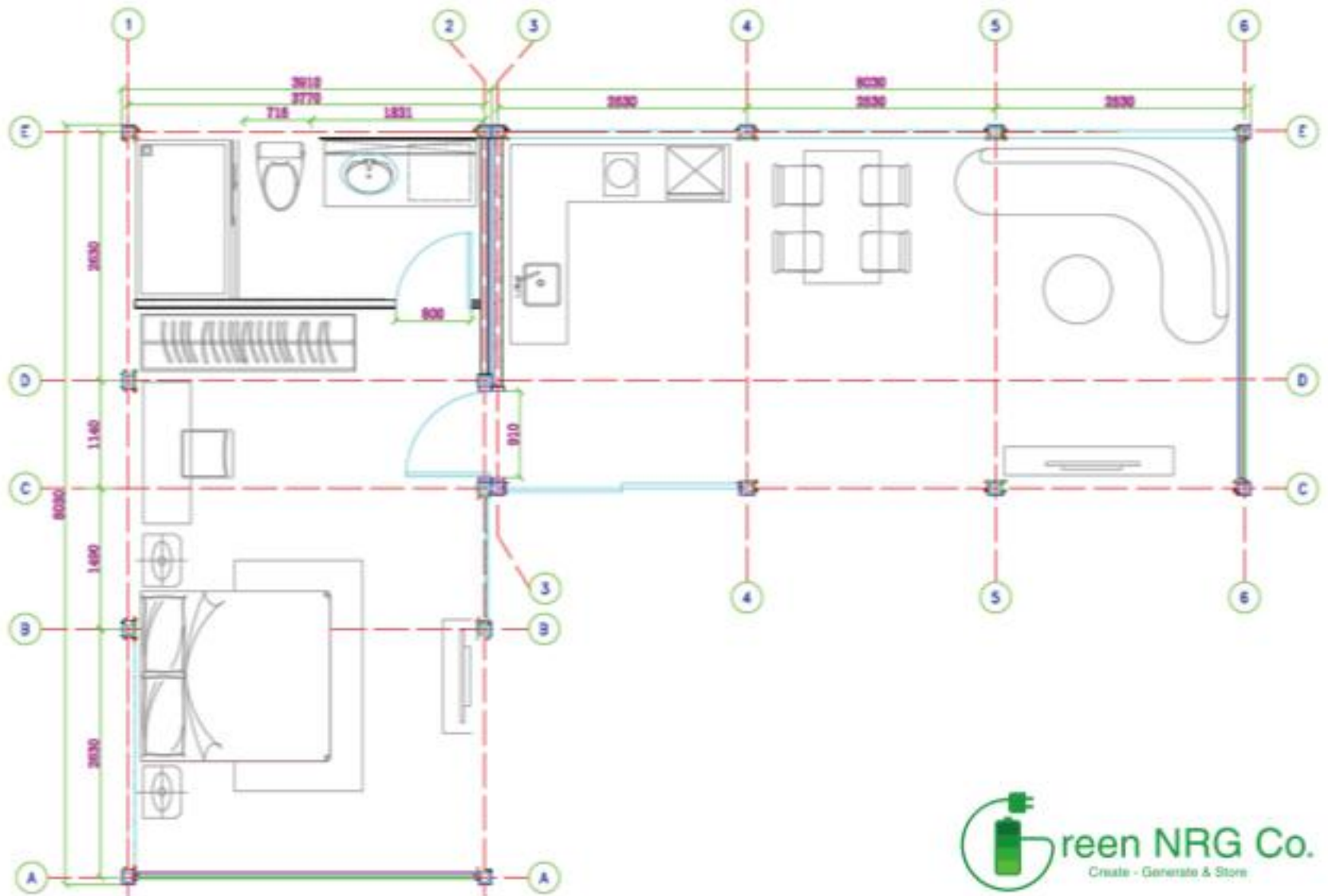
L Shape Large mobile house was assembled by two modulars, each covers an area of 4.0m*8.0m. The gross area is 64 m².

L Shape Small mobile house was assembled by two modulars, each covers an area of 3.3m*6.5m. The gross area is 43 m².

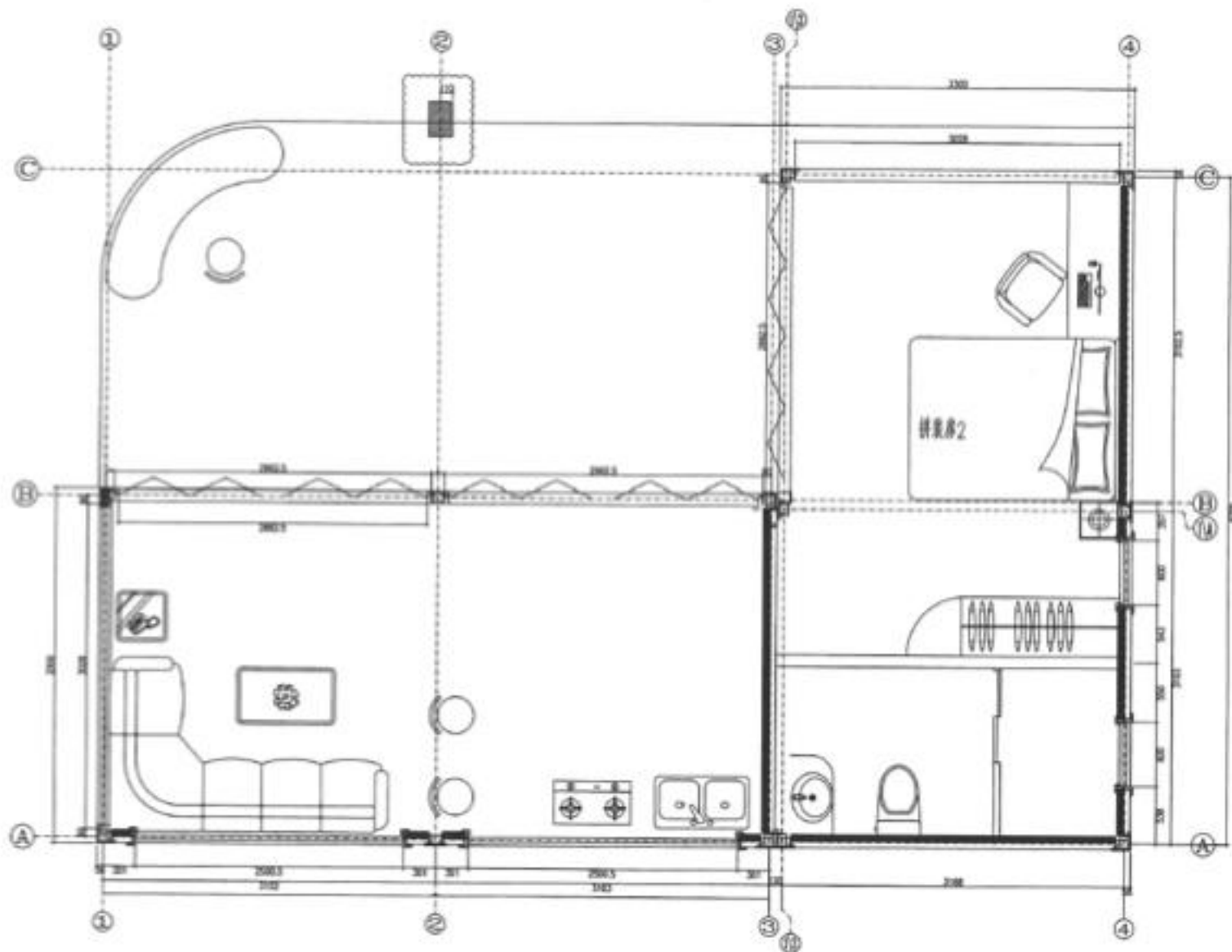




Floor plan 1、 Type L Large 64m² (Domestic Market)



2、Type L Large 43m² (Overseas Market)





Type T mobile house

2 bedrooms, 1 living room, 1 bathroom

Type T mobile house has two different layouts.

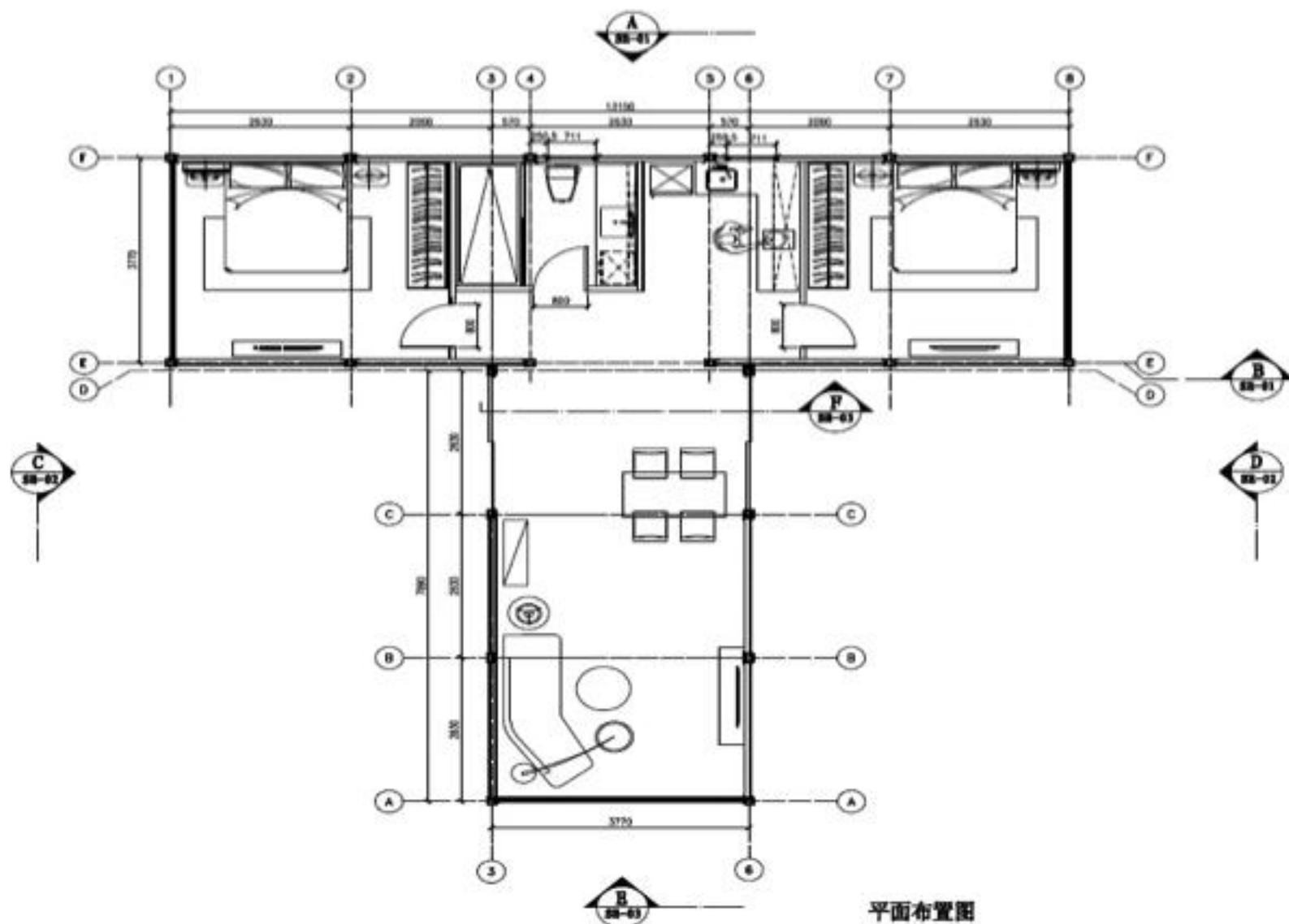
T Shape Large was assembled by two modulars, one covers an area of 4.0m*8.0m and the other one is 4.0m*13m. The gross area is 84 m².

T Shape Small was assembled by two modulars, one covers an area of 3.3m*6.5m and the other one is 3.3m*13m. The gross area is 66 m².



Floor plan

1、Type T Large 84m² (Domestic Markets)

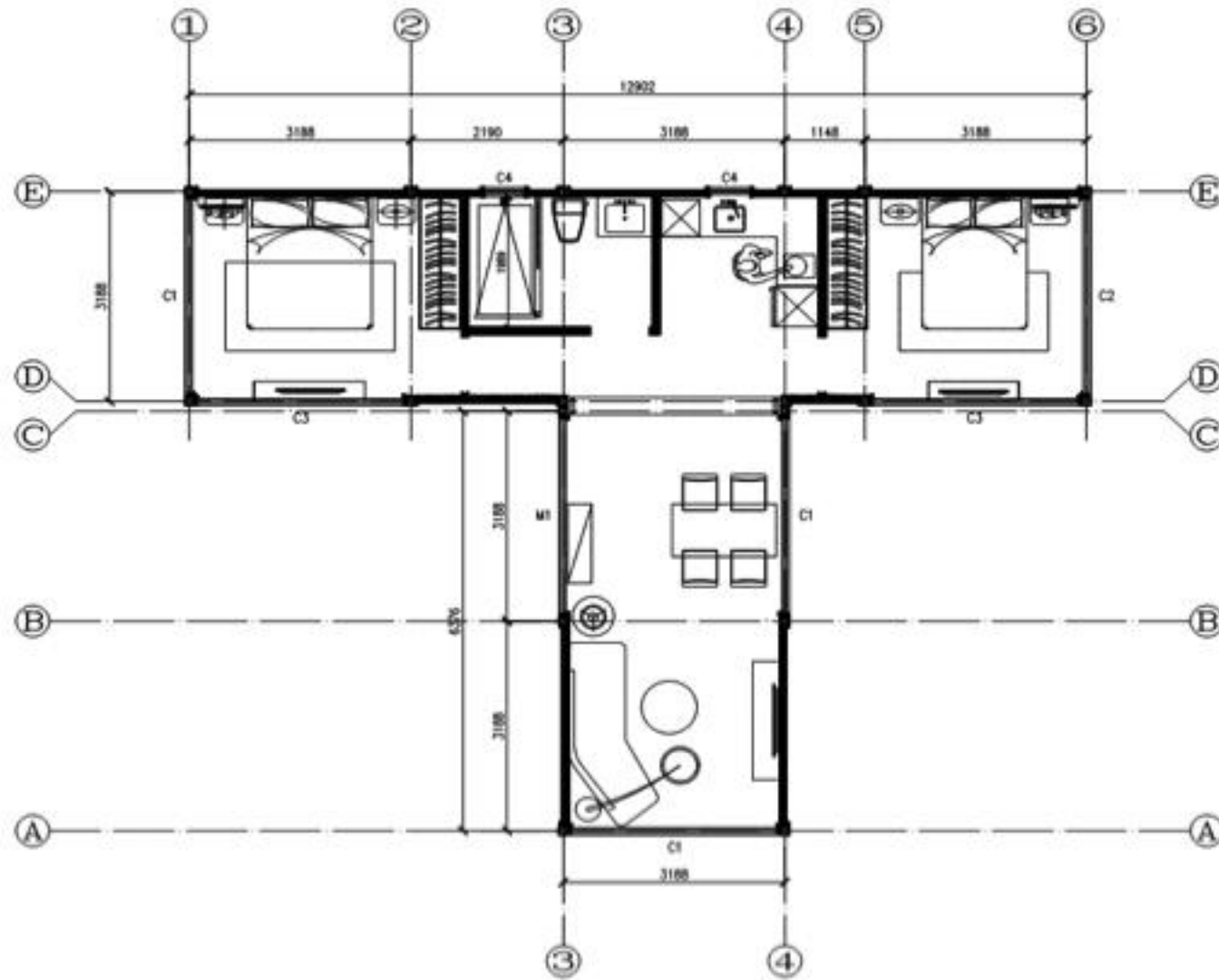


平面布置图

Interior view



2、Type T Small 66m² (Overseas Markets)





Green NRG Co.

Create - Generate & Store

MPS Power Station

PROPOSAL FOR POWER, WATER and HOUSING SUPPLY IN NIGERIA REGION

Natural Energy Power Station

Mini Power Station in remote parts of Africa will be a set



MPS

The MPS system is like no other on the market thus far it has the ability for a fast charging battery storage system combined with multiple inputs like Solar, Wind and Hydro (optional) generator and additional PV giving you complete control of your own power without the need to connect to mains power if required. Our dual carbon battery system will revolutionise the world in how we see it today. Dual carbon battery barely changes temperature; therefore it is unsusceptible to thermal runaway like lithium-ion batteries. (Released 2016) (See annexure)

This also means that the battery doesn't require a heavy and complex cooling system when used in large numbers such as running a house or building. The system does not contain any rare earth metals such as those used in nickel-metal hydride batteries and the battery is 100% recyclable. This means its effect on the environment is even greater. Furthermore, the company is working on a new material it calls carbon complex. Unlike carbon that's commercially available today which comes from mining and extraction, Carbon Complex is processed from organically grown cotton.

The power you generate can be stored in the battery system today and used **WHEN YOU FEEL LIKE IT**. With the **Smart Inverter System** in the MPS unit you can now switch from **SOLAR TO WIND TO GENERATOR** or **COMBINE ALL** or **BATTERY** or either and when all else fails mains power can also be used to generate power to restore the unit back to 100% battery storage system this function can even be set for charging on **OFF PEAK** tariff to further save even more money. There is also a remote monitor available which monitors your consumption. (UPS optional) and an **AUTO start genset** option for remote areas.



HOW IT WORKS (Basic)

MPS reduces power bills through self-consumption of photovoltaic electricity. This means absorbs power from natural recourses such as SOLAR, WIND or HYDRO. This contributes to the reduction of CO₂ emissions and serves as an emergency power source in the event of a disaster or just simply to save power to use at a later time further reducing the cost of consumption from the main power grid.

Unique ability to be able to run large load current and switch between input and output loads while still storing Green power to use at a later time for an uninterrupted power supply for any size load.



GreenNRG Co's MPS battery system includes a management unit designed to control charge and discharge of the battery. The system can store surplus electricity generated by rooftop solar panels for use when needed, further reducing the dependence on grid supplied power.

Fast charge time and auto switching when unit is full or depleted to enable continuous power to all equipment connected



Small Home



1-2 PEOPLE

Your Ideal System



1.5kW SYSTEM

WHAT'S COVERED:
Fridge
Energy efficient lights (less than 10)
LCD TV
Standby appliances
Washing Machine (1 load a week)
Dishwasher (2 loads a week)

Medium Home



2-3 PEOPLE

Your Ideal System



3kW SYSTEM

WHAT'S COVERED:
Fridge
Downlights (10 - 20)
LCD TV
Standby appliances
Washing Machine (3 - 5 loads a week)
Dishwasher (up to 5 loads a week)
Computer
Small air conditioner

Large Home



4+ PEOPLE

Your Ideal System



5kW SYSTEM

WHAT'S COVERED:
Fridge
Halogen lights (20+)
Plasma & multiple TVs
Standby appliances
Washing Machine (5+ loads a week)
Dishwasher (5+ loads a week)
Clothes dryer (5+ loads a week)
Computer
Large or multiple air conditioners
Pool pump

Our Products



Mini Power System

Solar Kit

Solar Panels

Solar Battery

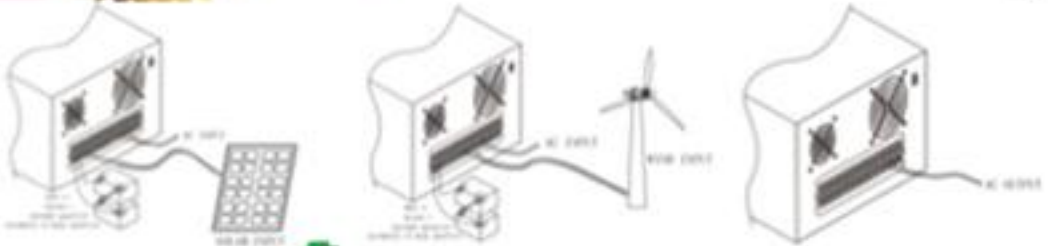
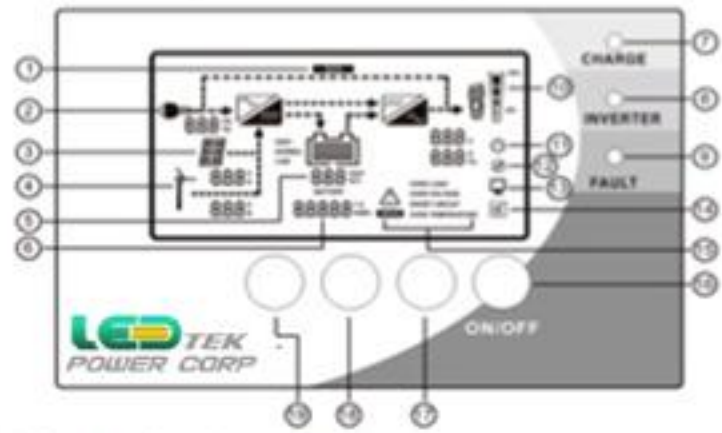
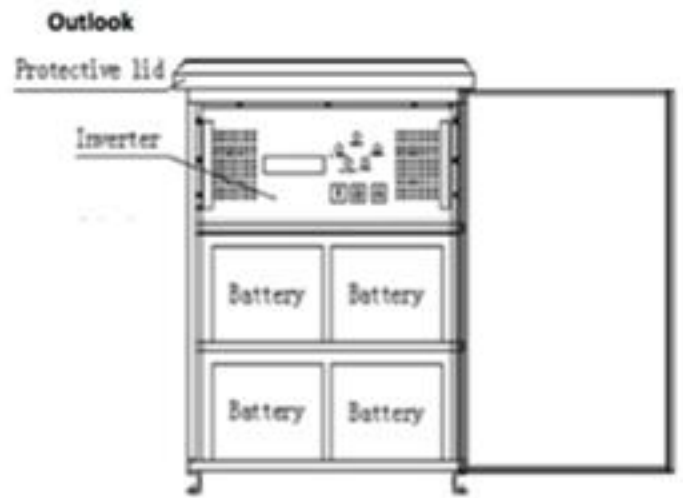
Solar Accessories





MPS — Mini Power System

Multi-functional power from renewable energy



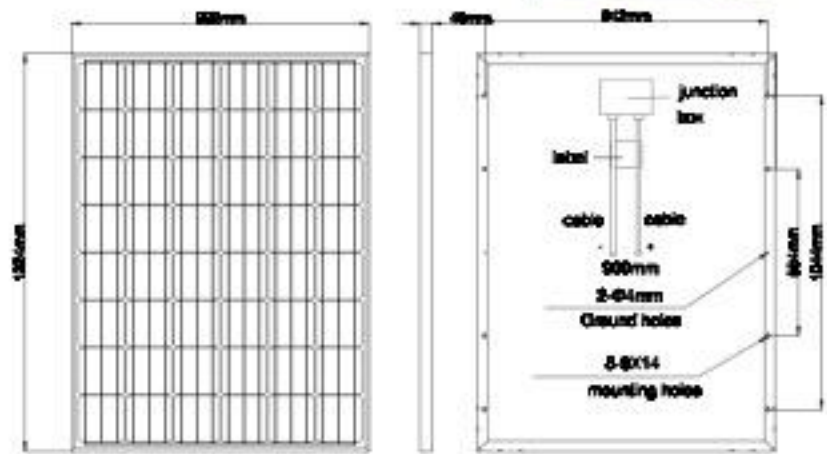
- ① Energy saving mode
- ② Mains input
- ③ Solar panel
- ④ Wind turbine
- ⑤ Battery capacity
- ⑥ Power generation/Parameter display
- ⑦ Charging LED
- ⑧ Inverter LED
- ⑨ Fault LED
- ⑩ Load indication
- ⑪ Date/Time setting indication
- ⑫ Setting indication
- ⑬ PC connection indication
- ⑭ Mute indication
- ⑮ Warning indication

High Efficiency Monocrystalline PV Module

LED TEK
POWER CORP



Excellent low-light
High Quality Bill of Materials
Reinforced Module Warranty
High Efficiency
Universal Design (residential,
commercial, ground mounted)

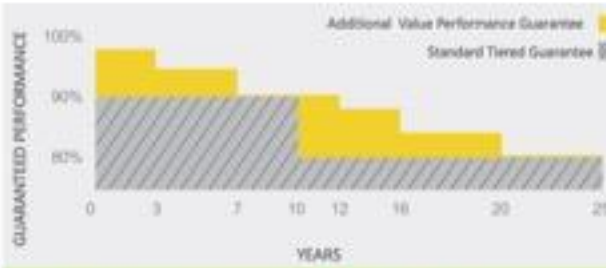


200W12V Mono

PRODUCT & ADVANTAGE

Our provides industry-leading product coverage for all our modules to ensure our customers achieve superior long-term value from their solar installations. In addition to a 10-year product warranty, which covers unanticipated module damage, implements a 25-year performance guarantee known as the Reinforced Module Warranty.

Our Solar's modules are the best in glass in terms of power output and long term reliability. Our meticulous product design and stringent quality control ensure our modules deliver a higher PV energy yield in live PV system as well. Our in-house Pv testing facilities guarantee all module component materials meet the highest quality standards possible.



Product guarantee for 10 years
Performance guarantee for 25 years



LED TEK POWER CORP MINI MPS Solar Kit



20W Solar Kit



Solar panel	Poly Crystalline 5m cable, without bracket	20W 18V	x1
	Lead acid battery	12AH/12V	x1
	PWM Charge controller	5A/12V	x1
Power Box with LED display	DC Output	12V	x4
	USB Output	5V 600mA	x1
	Working Time	12 hrs normally, 15hrs at full battery	
	Charging Time	8hrs normally, 6 hrs under good sunshine	
Accessories	LED bulb	3W	x4
	cable	Length: 5m/on off switch	x4
	USB cable	10 in 1 USB cable	x1

50W Solar Kit



Solar panel	Poly Crystalline 5m cable, without bracket	50W	x1
	Lead acid battery	33AH/12V	x1
	PWM Charge controller	15A/12V	x1
	Laptop Power Output	12V/3A-18V/3A-18V/3A	x1
Power Box with LCD display	DC Output	12V	x8
	USB Output	5V 1A	x1
	USB Output	5V 2A max	x1
	Working Time	10 hrs normally, 12hrs at full battery	
	Charging Time	8hrs normally, 6 hrs under good sunshine	
Accessories	LED bulb	5W	x4
	cable	Length: 5m/on off switch	x4
	USB cable	10 in 1 USB cable	x1



1300 02 SAVE

Product Specifications:
 Panel: 80W/18V
 Dimension: 890X64X25mm
 Heat: Size—315x137x274mm
 2. DC output:
 φ 6.5 DC socket DC12V/1A, 2 outlets, 2A max
 USB socket DC5.5V/0.5A, 2 outlets, 1.1A max
 3. MAX. AC Output: AC200W, 220V 50Hz, modified sine wave
 4. Storage Battery 12V/40 AH, rechargeable
 5. Solar Charging input interface: inner φ 6 connection rings
 6. Working Time: AC 200 W & 2pins 3 W / 12 V Energy - saving lamps can work 2 - 4 hours continuously. Only DC working time can be longer than 15 hours.
 7. Working temperature: -30°C~+50°C Solar

80W Solar Kit



80 Watts Solar Power Kit, an integrated solar power kit with multi-functions of Solar charging, 220VAC OUTPUT, 12VDC OUTPUT and USB Mobile - phone Charging OUTPUT. It is easy to operate and convenient to move, it is the most suitable for the area lighting, television, fan and mobile phone charging.



100W Solar Kit



200W Solar Kit



500W Solar Kit

Solar Panel	Poly Crystalline 10m cable, without bracket	100W	x2
	Lead Acid Battery	160Ah/24V	x1
	PWM Charge controller	30A/12V	x1
Power box with LCD display	Inverter	Pure Sine Wave 24V/300W	
	AC output	220V/110V 50/60Hz	
	Cigarette Lighter Socket	DC12V	x3
	DC Output	12V	x6
	USB Output	5V	x1
Accessories	LED bulb	5W	x6
	Cable	Length:5m/with switch	x6
	USB cable	10 in 1 USB cable	x1



Solar panel	Poly Crystalline 10m cable, without bracket	100W	x1
Power Box with LCD display	Lead acid battery	55Ah/12V	x1
	PWM Charge controller	30A/12V	x1
	Inverter	Pure Sine Wave 12V/300W	
	AC output	220V/110V 50/60Hz	
	Cigarette Lighter Socket	DC12V	x2
Accessories	DC Output	12V	x6
	USB Output	5V	x1
	Working Time	6 hrs normally, 8hrs at full battery with AC load	
Accessories	Charging Time	8hrs normally, 6 hrs under good sunshine	
	LED bulb	5W	x4
	Cable	Length:5m/ on off switch	x4
Accessories	USB cable	10 in 1 USB cable	x1
	Solar panel mounting structure	Ground mounting type	

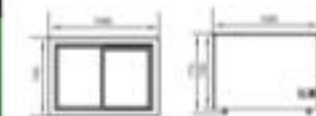
Solar panel	Poly Crystalline 10m cable, without bracket	100W	x2
Power box with LCD display	Lead Acid Battery	120Ah/12V	x1
	PWM charge controller	30A/12V	x1
	Inverter	Pure Sine Wave 12V/300W	
	AC output	220V/110V 50/60Hz	
	Cigarette Lighter Socket	DC12V	x3
Accessories	DC Output	12V	x6
	USB Output	5V	x1
	LED bulb	5W	x6
Accessories	Cable	Length:5m/on off switch	x6
	USB cable	10 in 1 USB cable	x1

SOLAR FRIDGE



Product Specification

Net Capacity	280 Liters			
Temperature	0-10°C			
Coolant	R134a, totally CFC free			
Insulation	C-pentane, 110mm thick			
Input Power	60W/DC			
Power Supply	DC: 12V/24V (automatic chargeover) AC: 240V/50HZ			
Body size	W1080 x D580 x H1780mm			
Packing size	W1140 x D630 x H1860mm			
Weight	53kg/net, 87kg/gross			
Container Loading	20pcs/20' 30pcs/40' 70pcs/40HQ			



Net Capacity	36 Liter freezer, 165 Liter fridge
Temperature	0-10°C fridge, -15°C freezer
Coolant	R134a, totally CFC free
Insulation	C-pentane, totally CFC free
Input Power	60W
Power Supply	DC: 12V/24V (automatic chargeover)
Body size	W590 x D580 x H1428mm
Packing size	W660 x D635 x H1510mm
Weight	53kg/net, 60kg/gross
Container Loading	30pcs/20GT, 70pcs/40GT, 70pcs/40HQ



Net Capacity	280 Liters
Temperature	0-10°C
Coolant	R134a, totally CFC free
Insulation	C-pentane, totally CFC free
Input Power	110W/DC
Power Supply	DC: 12V/24V (automatic chargeover) AC: 240V/50HZ
Body size	W820 x D580 x H1780mm
Packing size	W870 x D630 x H1860mm
Weight	70kg/net, 79kg/gross
Container Loading	20pcs/20' 30pcs/40' 70pcs/40HQ

Solar Panels



Mobile SOLAR FAN

Product Details



Product Pictures:



Specifications:

- 10" DC fan
- 3 level controller; H: 1600RPM
- High quality & competitive price
- Energy saving
- All new quality warranty materials
- OEM & ODM
- CE& IONET & CQC & SONCAP

Applicable Fields:

- Household-cooling
- Camping-cooling
- Traveling-cooling
- Outdoor and indoor cooling
- Emergency for power outage
- Temporary jobs
- Other temporary without power supply regions
- Cooling and brightening



Motor:	12volt full copper
Speed:	3 speed control
High speed:	1600RPM±10%, strong airflow
Case material:	ABS
Power method:	DC 12V
Power rated:	6W
Fan blade:	250MM, 10inch
Packing size:	32.5"12.5"36cm
Carton size:	66.5"39"40.5cm
Loading qty:	20PCS/20' 30PCS/40' 70PCS/40HQ

Solar street Light



Solar street Light 10W



Product specification-24W

- Solar panel**
12W 24V Poly Crystalline Life time - more than 20 years
- Battery**
LiFePO4 12AH 12.8V Life time - 5-6 years
- LED** - Power
3W 800lumens
- 12W 2400lumens Max Mounting hardware -
Led chip brand: Epistar
-Life time: >50000 hours
-Viewing Angle: 120°
- Colour temperature**
Pure/Cool white, 4000-6000K
- PIR sensor**
18-12m, detection angle: 140 degree, Selectable
- Charge time**
6h under peak sunshine, Normally 8h under sunshine

Product specification-10W

- Solar panel**
-Max power 3W 3V Poly Crystalline -Life time - more than 25 years
- Battery**
-Type: LiFePO4 6.0AH 6.4V -Life time: 5-6 years
- LED**
-Max Power: 10W 1000lumens (with reflector , 1w=100lumens)
-led chip brand: Epistar
-Life time: >50000hours
-Viewing Angle: 120°
-Colour temperature: Pure/Cool white, 4000-6000K
- PIR sensor:** 7-9m, detection angle: 140 degree.
- Charge time:** 6 h under peak sunshine, normally 8h under sunshine.



- Working mode and time**
Lighting mode for your choice:
A. With PIR sensor, saving mode 2W led, motion sensed turn to 10W led for 1min, working 10 hrs/night
B. With PIR sensor, saving mode 2W led, motion sensed turn to 10W led for 1min, working 12 hrs/night



Product specification
50W 60W 80W 100W 120W

Australia Head office
1/31 Crown Court, Varsity Lakes, QLD 4227
Phone: +61 7 5568 0030
Fax: +61 7 5568 0055

Focus on the global renewable energy

Efforts to research and development



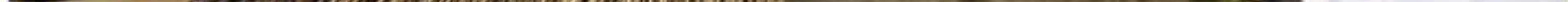
LED TEK
POWER CORP

Quality Controls



Quality Controls





Our Products

Mini Power System



Solar Kit



Solar Panels



Solar Battery



Solar Accessories







Green NRG Co.

Create - Generate & Store

Clean Water

PROPOSAL FOR POWER, WATER and HOUSING SUPPLY IN NIGERIA REGION

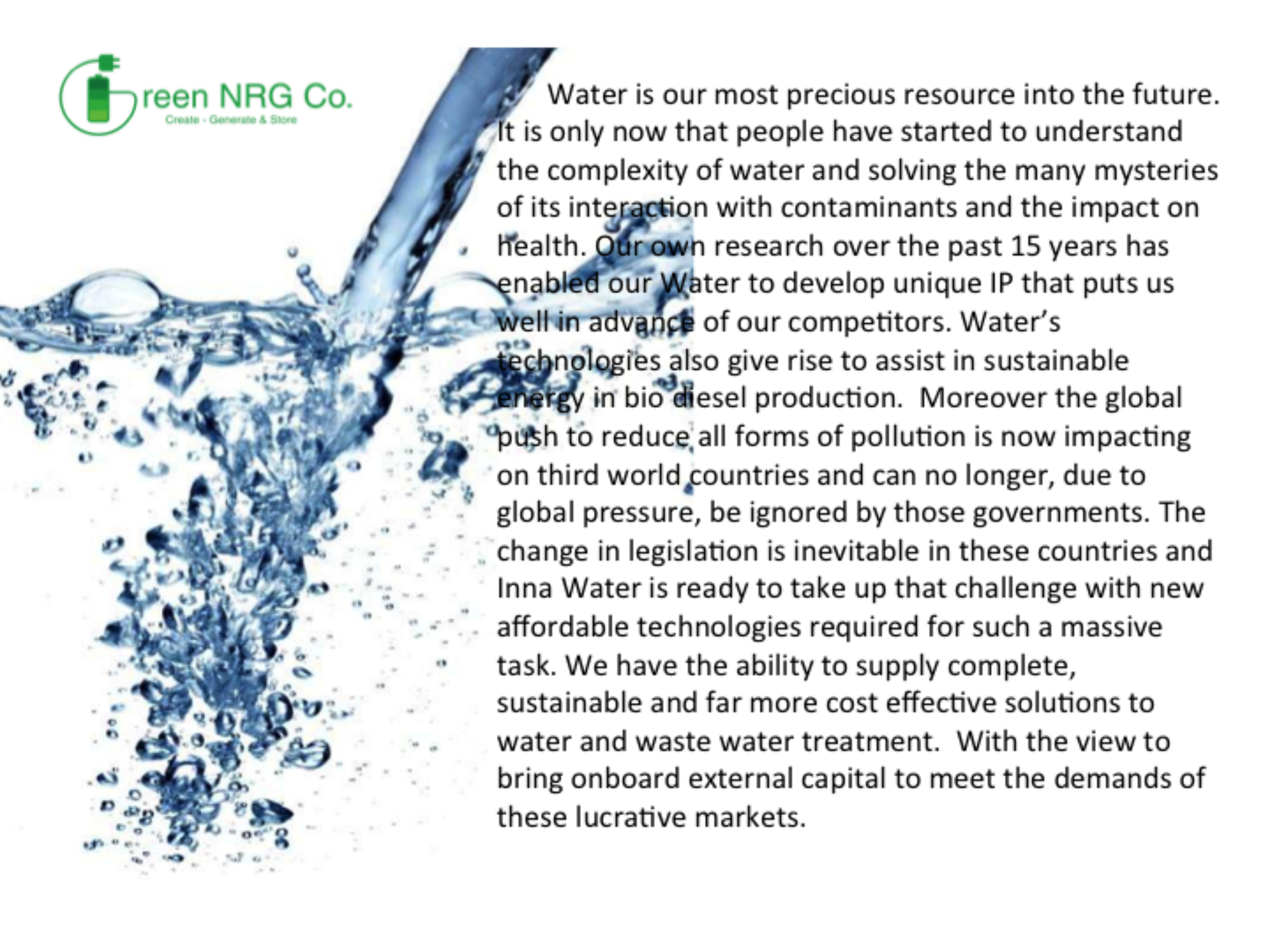
Circulating filter the drinking water station



Africa is a serious water shortage area in the world, and in lack of 26 countries in the world, there are 11 in Africa. Due to a serious shortage of rainfall, the extreme shortage of water resources in the African continent experiencing unprecedented drought, land cracked, rivers dried up, desert expansion.

Circulating filter the drinking water station

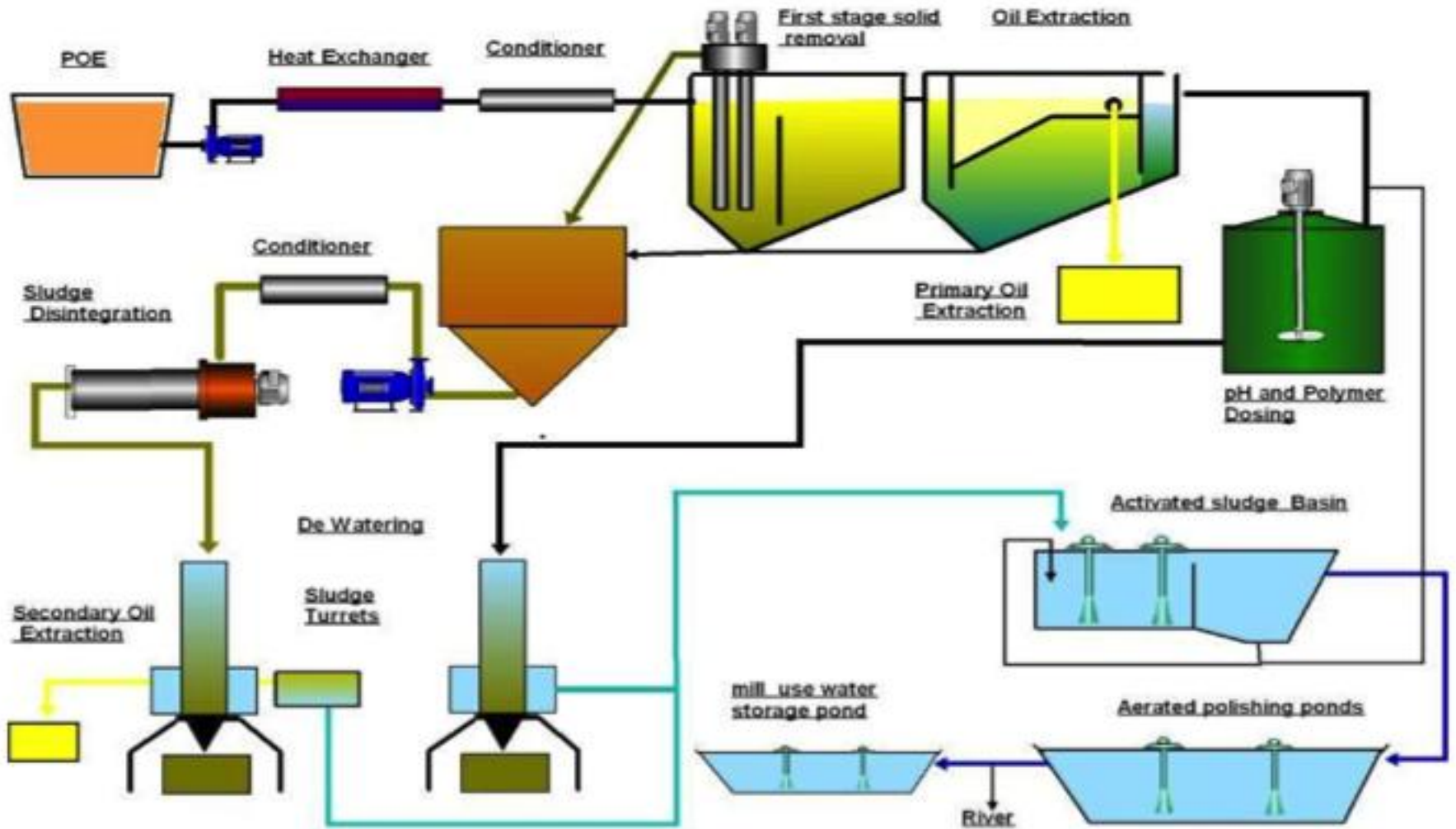


A dynamic background image showing a stream of clear blue water falling from the top left, splashing and creating numerous bubbles and droplets as it descends towards the bottom center. The water is set against a plain white background.

Water is our most precious resource into the future. It is only now that people have started to understand the complexity of water and solving the many mysteries of its interaction with contaminants and the impact on health. Our own research over the past 15 years has enabled our Water to develop unique IP that puts us well in advance of our competitors. Water's technologies also give rise to assist in sustainable energy in bio diesel production. Moreover the global push to reduce all forms of pollution is now impacting on third world countries and can no longer, due to global pressure, be ignored by those governments. The change in legislation is inevitable in these countries and Inna Water is ready to take up that challenge with new affordable technologies required for such a massive task. We have the ability to supply complete, sustainable and far more cost effective solutions to water and waste water treatment. With the view to bring onboard external capital to meet the demands of these lucrative markets.



The ISP⁺ environmental system

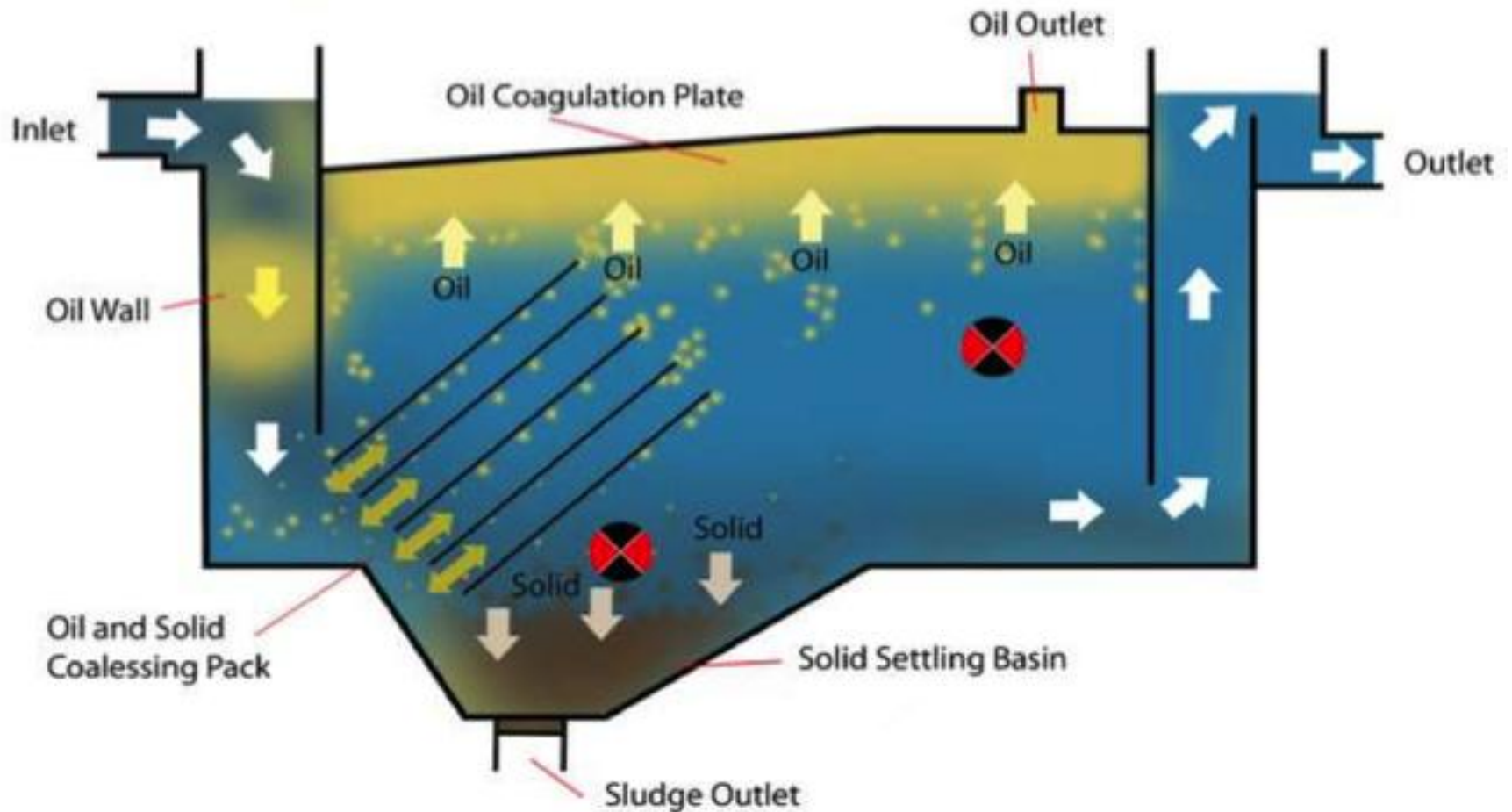


Confidential Copyright Information Memorandum Copyright Inna Water Limited (2015)

This document is restricted in circulation to sophisticated or professional investors. No part of this document may be copied or distributed in part or whole to parties other than the authorised recipient, without the express agreement of Inna Water Limited.

This document does not constitute an offer to sell or solicitation of an offer to buy any security.

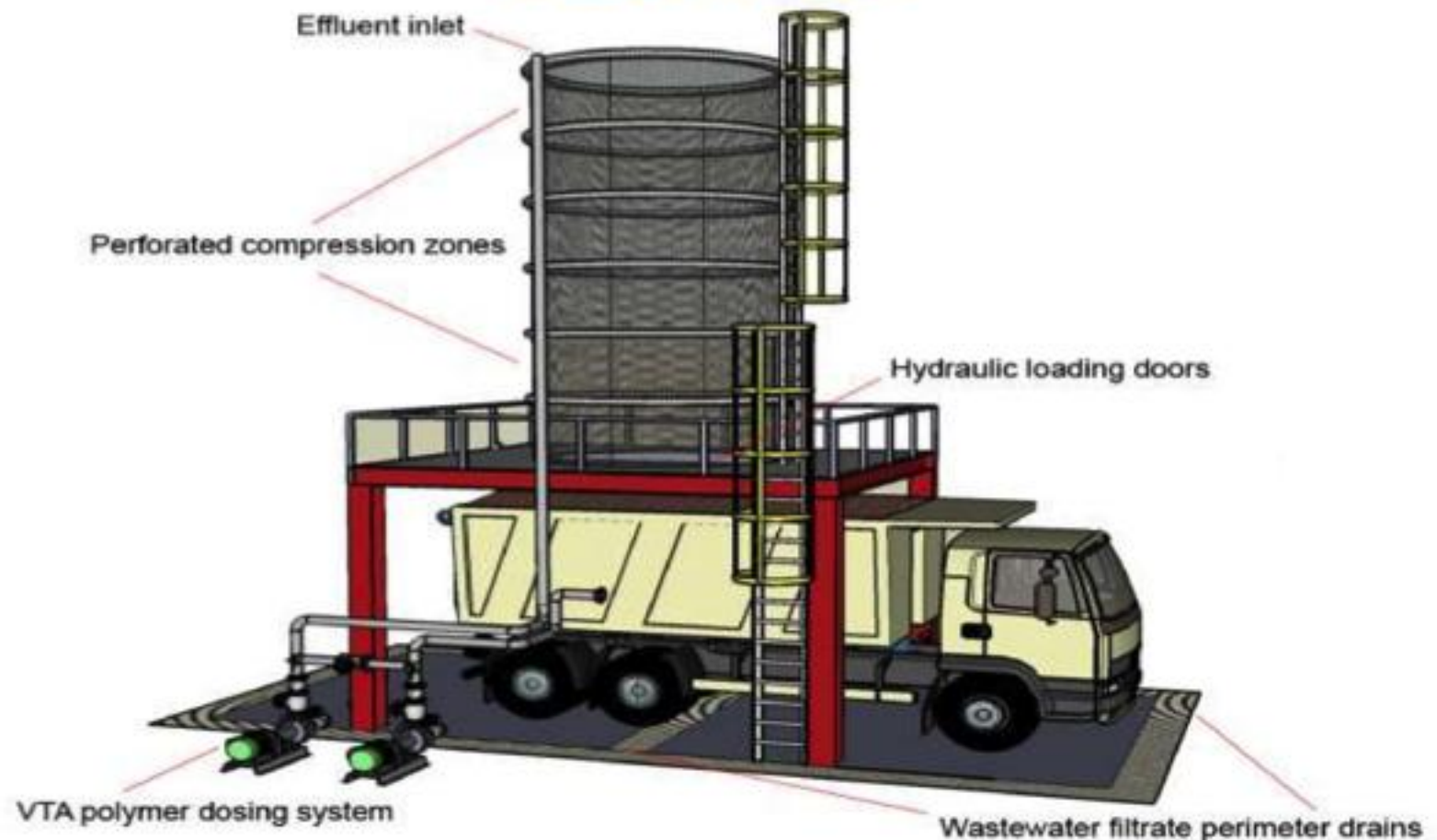
The Liquidator™ pressurised separation chamber



Confidential Copyright Information Memorandum Copyright Inna Water Limited (2015) ©

This document is restricted in circulation to sophisticated or professional investors. No part of this document may be copied or distributed in part or whole to parties other than the authorised recipient, without the express agreement of Inna Water Limited. This document does not constitute an offer to sell or solicitation of an offer to buy any security.

Sludge Turret™





ISP+ Technology and its Flow-on Effects

Activity and Technology	Revenue Increase	Cost Reduction	Air Pollution Mitigation	Water Pollution
Effective recovery of Palm Oil Mill Sludge (POMS) from the sludge pit. This process employs sonic	Higher efficiency in oil extraction			Reduces BOD
Effective extraction of solids to bypass problematic anaerobic digestion. This process employs vertical compressive sludge dewatering technology.	Increases oil extraction rates and produces organic compost feedstock for sale Reduces maintenance and	Saves on pond de silting cost	Avoids anaerobic methane generation	Reduces BOD
Effective activated aeration. This process employs multi-depth Positive aqua solutions to recycle high quality wastewater back to the palm oil mills steam boilers	Increases land area by 15 acres for crop production	Reduces boiler maintenance costs	Avoids anaerobic methane generation	Reduces POME emissions
Wastewater disinfection. This process employs Cell Destruction Unit to provide portable drinking	Provides better working conditions			Prevents water borne





- EMERGENCY RELIEF PLANTS
- SOLAR DROUGHT PROOF SUPPLY
- HIGH QUALITY SOFT WATER
- RELIABLE, PROVEN TECHNOLOGY
- ENVIRONMENTALLY FRIENDLY
- ALL INCOME GENERATED ASSIST FUTURE HUMANITARIAN PROJECTS



YOU WILL NEVER NEED TO EXPERIENCE WATER SHORTAGES AGAIN IN ISLAND COMMUNITIES OR COASTAL REGIONS





Thank You



Ade Kukoyi
(Australia Africa Representative)



Anthony Aucone
(Australian CEO GreenNRG)



Ken Ekwuribe
(Africa)

